



26. August 2015

HARDANGER

ACTIVE RURAL WELLBEING

Jan Tjosaas, Kvam herad - Business developer

Trude Rinaldo, Hardangerrådet - Consultant

www.hardanger.com



EIDFJORD
KOMMUNE



GRANVIN
HERAD



JONDAL
KOMMUNE



KVAM
HERAD



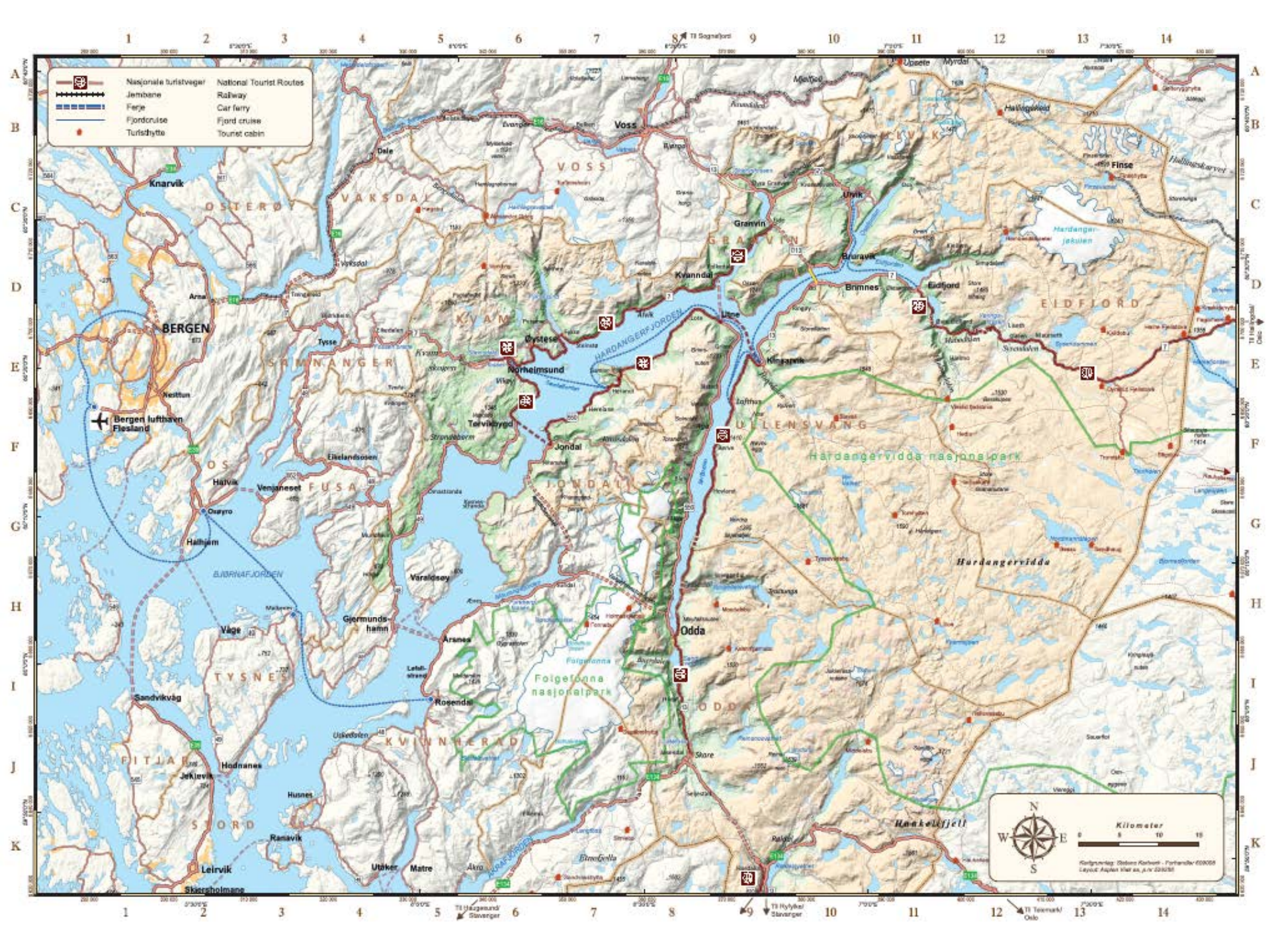
ODDA
KOMMUNE



ULLENSVANG
HERAD



ULVIK
HERAD



- Nasjonale turistveger National Tourist Routes
- Jernbane Railway
- Ferje Car ferry
- Fjordcruise Fjord cruise
- Turistdytte Tourist cabin

0 5 10 15
 Kilometer
 Kartgrunnlag: Debes Kartverk - Forthander 600008
 Layout: Asplan Maler as, v. 0.1.2015



Hardangerrådet iks



Hardangercouncil is an active collaborator. We work closely with the 7 municipalities in Hardanger.

Tourism is of great importance to our region, and as you will soon see, all of Hardanger is rural.

- We are a support and supplement to all 7 local municipalities and their administrations
- Business development are among our tasks. It is important to work for new businesses and development of existing . To be an organizer and and prepare for the future.
- We also work with national government issues on behalf of our region.



EIDFJORD
KOMMUNE



GRANVIN
HERAD



JONDAL
KOMMUNE



KVAM
HERAD



ODDA
KOMMUNE



ULLENSVANG
HERAD



ULVIK
HERAD



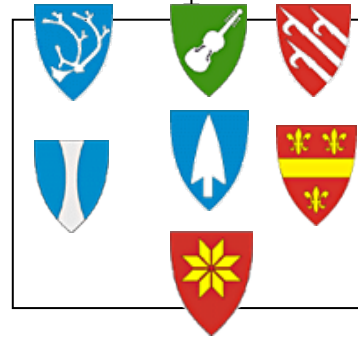
HARDANGER 2030

Future

Population

Municipalities

Project



HARDANGERCONFERENCE

KUNSTNARHUSETMESSEN



www.khmessen.no

Artist in residency

Exhibitions for local and guest artists.





Hardangerrådet iks



Hardanger council and tourist industry in Hardanger:

- Be in front, prepare and organize on regional level.
Focus from above
- Build network and strengthen the Hardanger region
- Address development issues and cases
- Engage and take initiative also for tourism



EIDFJORD
KOMMUNE



GRANVIN
HERAD



JONDAL
KOMMUNE



KVAM
HERAD



ODDA
KOMMUNE



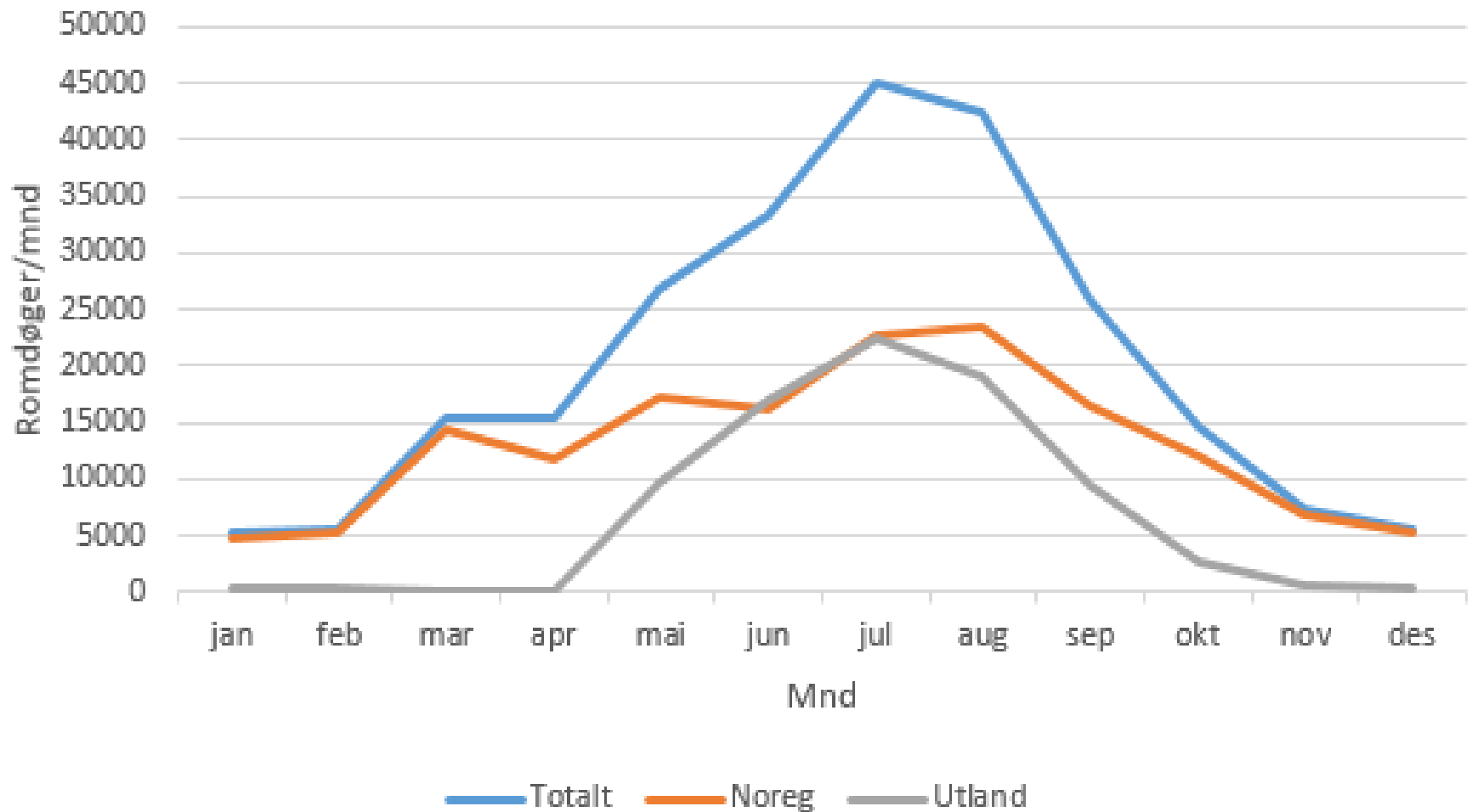
ULLENSVANG
HERAD



ULVIK
HERAD

CHALLENGE

Romdøger hotell pr mnd i Hardanger 2013





Hardangerrådet iks



Good life





Hardangerrådet iks



Living



Nature





Hardangerrådet iKS



Quiet





Hardangerrådet iks



Accommodation

- ❖ Hotels
- ❖ Agriculture
- ❖ Small guesthouses
- ❖ DNT
- ❖ Cabins luxury
- ❖ Cabins simple
- ❖ Camping





Hardangerrådet iks





Hardangerrådet iKS



Activities





Hardangerrådet iks





Hardangerrådet iKS



Hiking

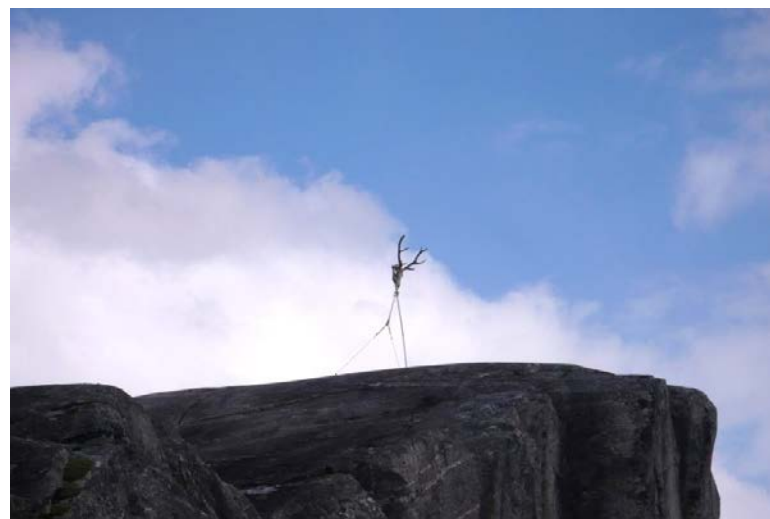




Hardangerrådet iks



Art

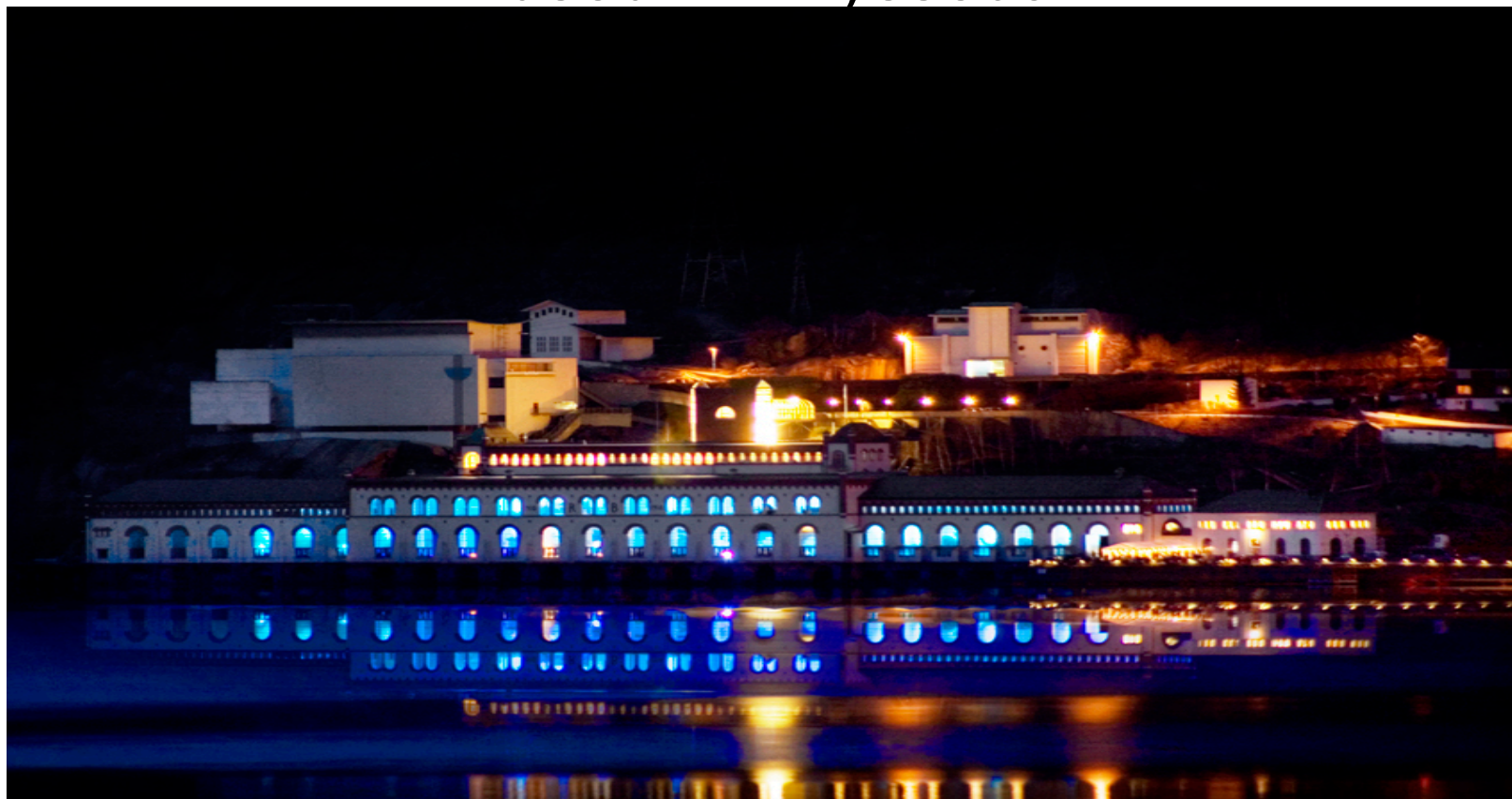




Hardangerrådet iks



Museum Tyssedal





Hardangerrådet iks



Traditions

Baking





Hardangerrådet iks



Fruit and berries





Hardangerrådet iks



Growing fruit





Hardangerrådet iks



What is Rural Wellbeing in Hardanger?
What should we focus on?

Aims for Rural Wellbeing Hardanger :

- Have Local community “ON STAGE”
- Short access to nature
- Local Food
- Focus on better and more local income
- Personal hosts - Be our guest
- Local guides



EIDFJORD
KOMMUNE



GRANVIN
HERAD



JONDAL
KOMMUNE



KVAM
HERAD



ODDA
KOMMUNE



ULLENSVANG
HERAD



ULVIK
HERAD

Important associations and network in Rural Norway, who support rural wellbeing :

- ❑ Destination Hardangerfjord www.hardangerfjord.com
- ❑ National Tourist Routes www.nasjonale turistveger.no
- ❑ Hanen www.hanen.no
- ❑ DNT www.dnt.no
- ❑ Some local food and markets www.siderfestivalen.no,
www.hardanger-matkulturfestival.no



EIDFJORD
KOMMUNE



GRANVIN
HERAD



JONDAL
KOMMUNE



KVAM
HERAD



ODDA
KOMMUNE



ULLENSVANG
HERAD



ULVIK
HERAD



DNT Stavali



Husedalen



Reinanuten (from Buerdalen)



folgefonna-breforarlager.no



Queen Sonja's panoramic hiking trail



Buerdalen





To Kjeåsen



Torefjell



Fitjadalen



Grubbafjellet



flatearth.no



SYKKEL 1222



Rallarvegen



Between Utne and Herand

sykkelihardanger.no



Via ferrata to Trolltunga

www.opplevodda.com



ST 6442

Visitor farm at Steinstø

www.steinsto.no



Local happiness



Cider farm in Ulvik

www.siderruta.no



Hardanger Folk Museum



Hardanger Folk Museum





Hardangervidda Nature Centre Eidfjord



Steinsdalsfossen



Hardanger Maritime Museum Norheimsund



Kabuso art centre, Øystese



Kabuso art centre, Øystese



Route 7 on the Hardangervidda



6%
Steilheit
1:16,7



Hardangerfjord Sightseeing in Herand



Ferry crossing near Utne



Pilagutt 11 pax, Jondal



Hardangervidda Nature Centre Eidfjord



Folgefonna

Breyfórarlag

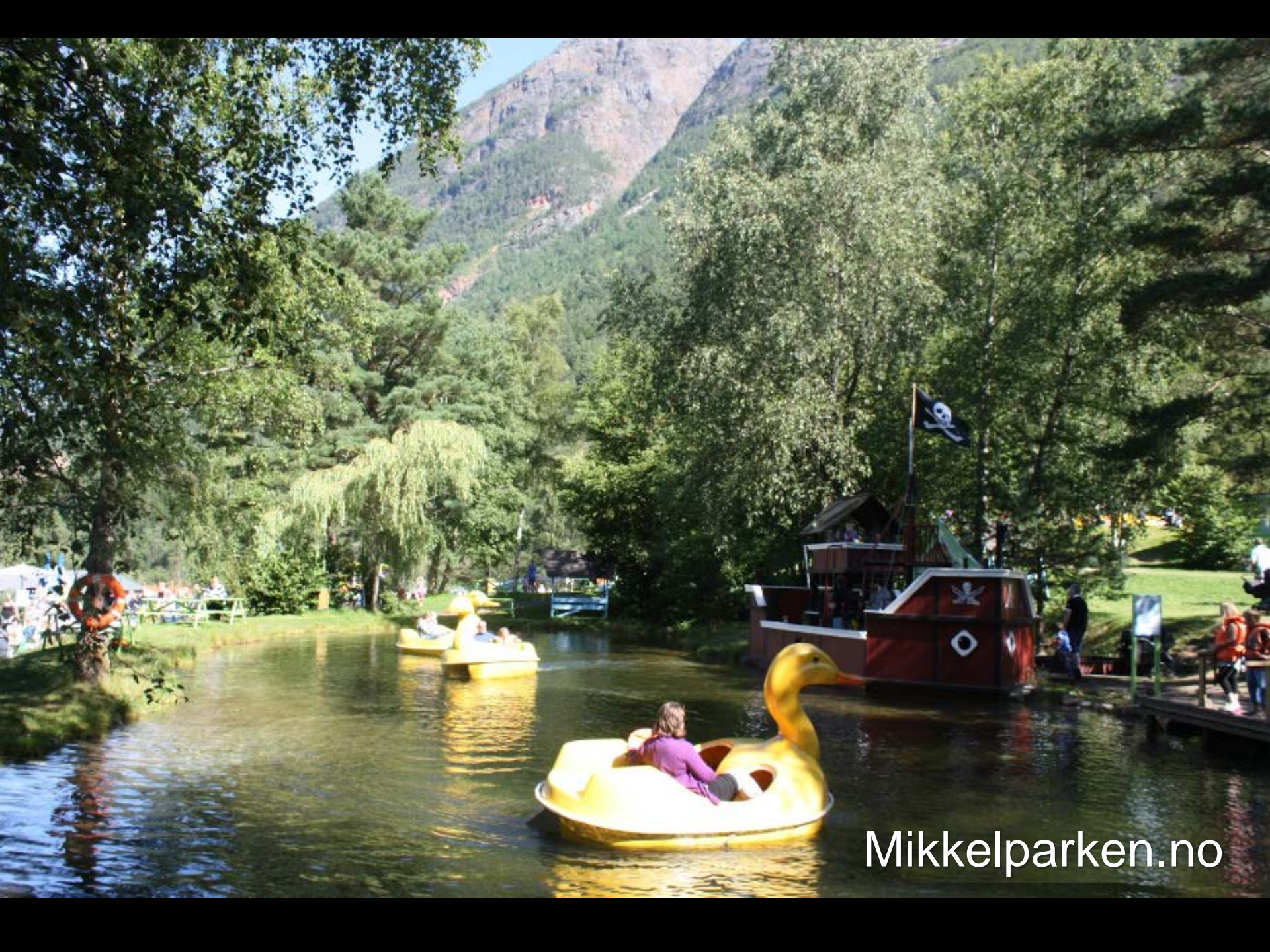




Summer Break



Hardanger Maritime Museum Norheimsund



Mikkelparken.no



Vøringsfossen



www.hardangerbasecamp.com



Oddland Camping Norheimsund



Utne hotel

ÅRSB. 1852

Utne hotel

Utne hotel

Utne Hotel





Thon Hotel Sandven, Norheimsund



HARDANGER
MUSIKKFEST

Nærare musikken

KUNSTNERISK LEIING: THERESE BIRKELUND ULVO & TORA AUGESTAD



Closer to Music

DEN 20.
HARDANGER
MUSIKKFEST

21. - 25. MAI 2015



Hotel Ullensvang, Lofthus



WELCOME
TO
ACTIVE WELLBEING
IN
HARDANGER



www.hardanger.com



where you find **MAGIC**